



G-POWER 2 PRO Cooler

Installation Guide

GH-PSU22-LB



The following are not covered by the warranty:

- Using the product incorrectly or in a manner other than the designed purpose.
- Nonobservance of the proper operation provided.
- Malfunction due to interference from other devices.
- Unapproved modification of the product.
- Consequential damage to other objects due to the product's fault.
- Malfunction arising from natural hazards E.g. earthquake, lightning, fire, and floods.
- The product's warranty label has been removed or damaged.
- The devices inside, including power supply, hard disk, CD-ROM drive, motherboard, ventilator, etc., are not detached from the casing prior to transportation of the computer system, resulting in damage to the casing or other computer-related devices.
- Any loss/damage caused by failure to follow the installation process with in the user manual.



ONLY COMPATIBLE WITH 200mm (or larger) WIDTH CHASSIS.
Recommendations: 3D Aurora Series, 3D Mars Series, iSolo Series.

Features

- Fully compatible design, supports Intel LGA775 & AMD K8 / AM2 CPU platforms
- Curvius design combines CPU and MOSFET cooling
- High and Low RPM mode, provide acoustic and performance all together.
- One12cm large fan, high air flow volume with low RPM for efficient heat dissipation.
- 8mm, highly heat conducting heat pipes for enhanced cooling performance.
- Pure copper base with aluminum fins, extra large heat dissipation area to dispose excess heat more efficiently.
- Delicate design with blue light LED

Specification

Dimension: 121x126x162 mm
Fan size: 120x120x25 mm
Number of heat pipes: 5
Base material: copper
Cooling fin material: aluminum
Rated Voltage: 5V/12V
Rated Current: 0.2A
Fan speed: 700 RPM/1,500 RPM
Noise: 16/23 dBA
Bearing Type: Enter Bearing
Fan Life Expectancy: 30,000hr

Support

Intel® Core™ 2 Extreme Processor Series
Intel® Core™ 2 Quad Processor Series
Intel® Core™ 2 Duo Processor Series
Intel® Pentium® Extreme Edition Series
Intel® Pentium® D Processor Series
Intel® Pentium® 4 Processor Series (LGA775)
AMD AM2
AMD Athlon™ FX Series
AMD Athlon™ 64x2 Series
AMD Athlon™ 64 Series
AMD Sempron Series

Accessories



AMD K8/AM2 Clip



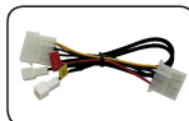
K8 Bracket x2



Intel LGA775 Bracket x2



Intel LGA775 Back Plate



Voltage-Regulated Fan Splitter Cable



Washers x4



Screw x4



Screw Nut x4



Thermal Grease



Dust Remover Cloth

Intel LGA 775 Platform Installation

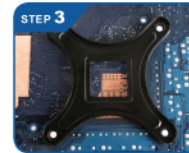


Apply a thin layer of thermal grease to the surface of the CPU.

CAUTION Before the installation, please turn off the power and unplug the power cord. Remove the "CAUTION" sticker on the bottom of the G-Power 2 Pro.



Secure the Intel LGA775 brackets to the screw holes at the bottom of G-Power 2 Pro.



Remove the twin adhesive cover on the Intel LGA775 back plate, stick on the back of motherboard.

CAUTION Make sure the screw holes are aligned correctly with the motherboard before applying the Intel LGA775 back plate. If the Intel LGA775 back plate cannot be applied, secure the G-Power 2 Pro with washers directly and skip step 5.



Place the G-Power 2 Pro onto the CPU, screws on the Intel LGA775 brackets need to pass through the screw holes on the motherboard.



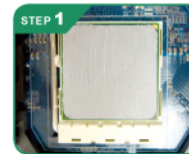
Secure the screw nuts on to the Intel LGA775 bracket.



Connect the 3-pin connector of the fan into the corresponding CPU fan socket on the motherboard.

NOTE Disable CPU fan alarm feature in BIOS settings if the voltage-regulated fan splitter cable is used which draws power directly from power supply.

AMD K8/AM2 Platform Installation



Apply a thin layer of thermal grease to the surface of the CPU.

CAUTION Before the installation, please turn off the power and unplug the power cord. Remove the "CAUTION" sticker on the bottom of the G-Power 2 Pro.



Secure the AMD K8/AM2 brackets to the screw holes at the bottom of G-Power 2 Pro.



Place the AMD K8/AM2 clip across the tray above cooler base.



Place the G-Power 2 Pro onto the CPU, lock one side of the AMD K8/AM2 clip on the raised points of CPU retention module.



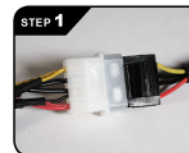
Lock the other side of the AMD K8/AM2 clip on the raised points of CPU retention module and fasten the latch to secure the G-Power 2 Pro to the CPU.



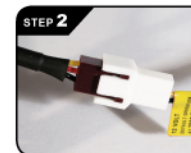
Connect the 3-pin connector of the fan into the corresponding CPU fan socket on the motherboard.

NOTE Disable CPU fan alarm feature in BIOS settings if the voltage-regulated fan splitter cable is used which draws power directly from power supply.

Voltage Regulated Fan Splitter Cable Installation



Connect the 4-pin power connector with the power supply's corresponding 4-pin power connector.



Connect the 3-pin connector of the fan with the 3-pin connector of the voltage regulated fan splitter cable.

NOTE yellow/black: 12V (1500RPM)
red/black: 5V (700RPM)