

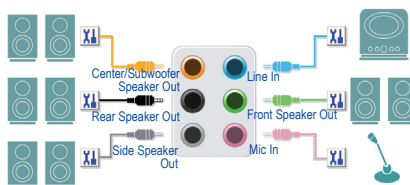
## **Configuring Audio Input and Output**

1-1	Configuring 2/4/5.1/7.1-Channel Audio .....	2
1-2	Configuring S/PDIF Out .....	5
1-3	Stereo Mix.....	5
1-4	Using the Voice Recorder .....	7

After you install the included motherboard drivers, make sure your Internet connection works properly. the system will automatically install the audio driver from Microsoft Store. Restart the system after the audio driver is installed.

## 1-1 Configuring 2/4/5.1/7.1-Channel Audio

The picture to the right shows the default six audio jacks assignment.

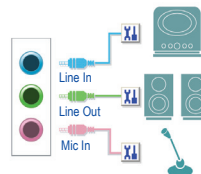


The picture to the right shows the default five audio jacks assignment.

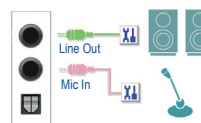
To configure 4/5.1/7.1-channel audio, you have to retask either the Line in or Mic in jack to be Side speaker out through the audio driver.



The picture to the right shows the default three audio jacks assignment.



The picture to the right shows the default two audio jacks assignment.

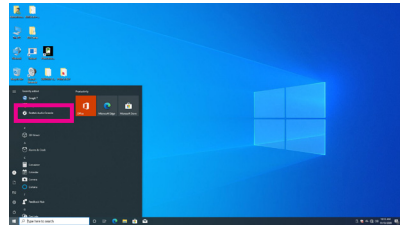


You can change the functionality of an audio jack using the audio software.

## A. Configuring Speakers

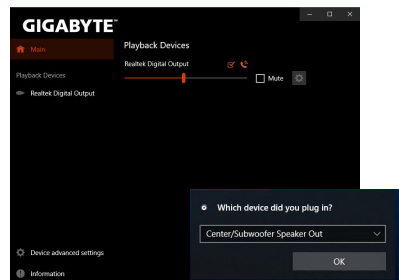
Step 1:

Go to the Start menu click the **Realtek Audio Console**. For speaker connection, refer to the instructions in Chapter 1, "Hardware Installation," "Back Panel Connectors."



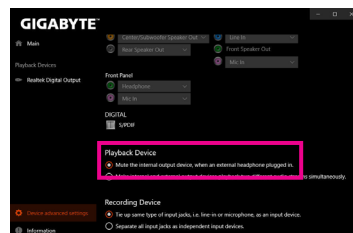
Step 2:

Connect an audio device to an audio jack. The **Which device did you plug in ?** dialog box appears. Select the device according to the type of device you connect. Then click **OK**.



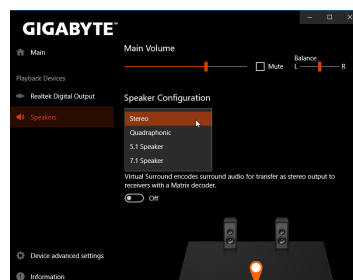
Step 3:

Click the **Device advanced setting** on the left. Select the **Mute the internal output device, when an external headphone plugged in** check box to enable 7.1-channel audio.



Step 4:

On the **Speakers** screen, click the **Speaker Configuration** tab. In the **Speaker Configuration** list, select **Stereo**, **Quadrasonic**, **5.1 Speaker**, or **7.1 Speaker** according to the type of speaker configuration you wish to set up. Then the speaker setup is completed.




## B. Configuring Sound Effect

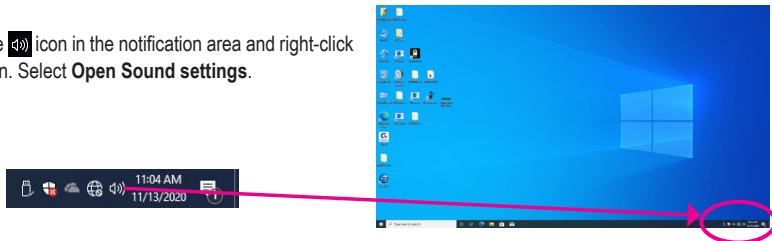
You may configure an audio environment on the **Speakers** tab.

### \* Configuring the Headphone

When you connect your headphone to the Line out jack on the back panel or front panel, make sure the default playback device is configured correctly.

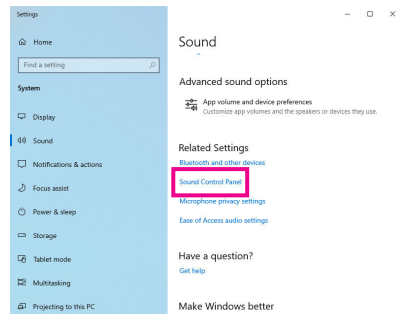
#### Step 1:

Locate the  icon in the notification area and right-click on the icon. Select **Open Sound settings**.



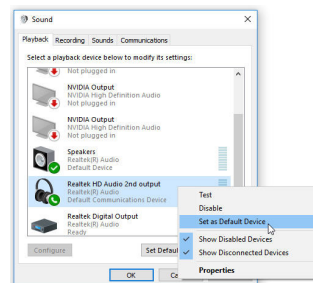
#### Step 2:

Select **Sound Control Panel**.



#### Step 3:

On the **Playback** tab, make sure your headphone is set as the default playback device. For the device connected to the Line out jack on the back panel, right-click on **Speakers** and select **Set as Default Device**; for the device connected to the Line out jack on the front panel, right-click on **Realtek HD Audio 2nd output**.



## 1-2 Configuring S/PDIF Out

The S/PDIF Out jack can transmit audio signals to an external decoder for decoding to get the best audio quality.

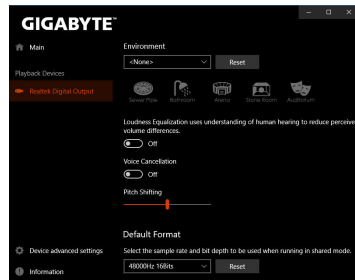
### 1. Connecting a S/PDIF Out Header:

Connect a S/PDIF digital audio cable to output digital audio from your motherboard to the supported audio devices.



### 2. Configuring S/PDIF Out:

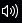
On the **Realtek Digital Output** screen, Select the sample rate and bit depth in the **Default Format** section.

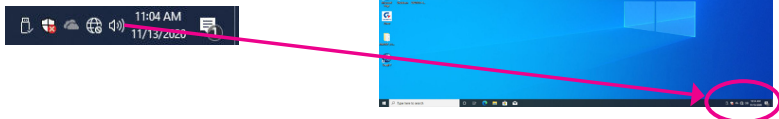


## 1-3 Stereo Mix

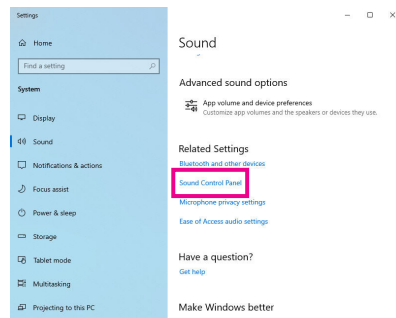
The following steps explain how to enable Stereo Mix (which may be needed when you want to record sound from your computer).

### Step 1:

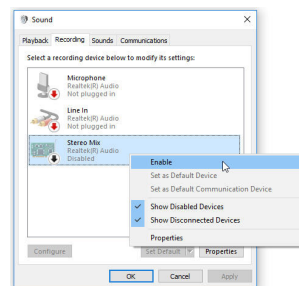
Locate the  icon in the notification area and right-click on the icon. Select **Open Sound settings**.



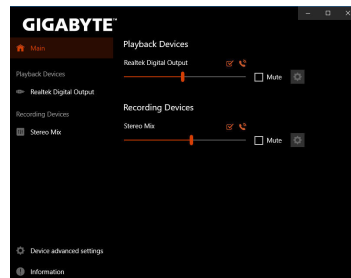
Step 2:  
Select **Sound Control Panel**.



Step 3:  
On the **Recording** tab, right-click on **Stereo Mix** item and select **Enable**. Then set it as the default device. (if you do not see **Stereo Mix**, right-click on an empty space and select **Show Disabled Devices**.)

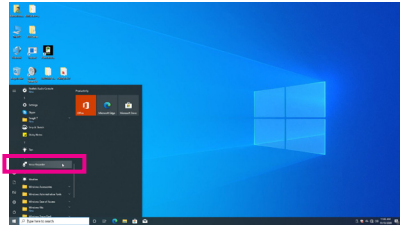


Step 4:  
Now you can access the **HD Audio Manager** to configure **Stereo Mix** and use **Voice Recorder** to record the sound.

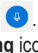



## 1-4 Using the Voice Recorder

After setting up the audio input device, to open the **Voice Recorder**, go to the Start menu and search for **Voice Recorder**.



### A. Recording Audio

1. To begin the recording, click the **Record** icon .
2. To stop the recording, click the **Stop recording** icon .

### B. Playing the Recorded Sound

The recordings will be saved in Documents>Sound Recordings. Voice Recorder records audio in MPEG-4 (.m4a) format. You can play the recording with a digital media player program that supports the audio file format.