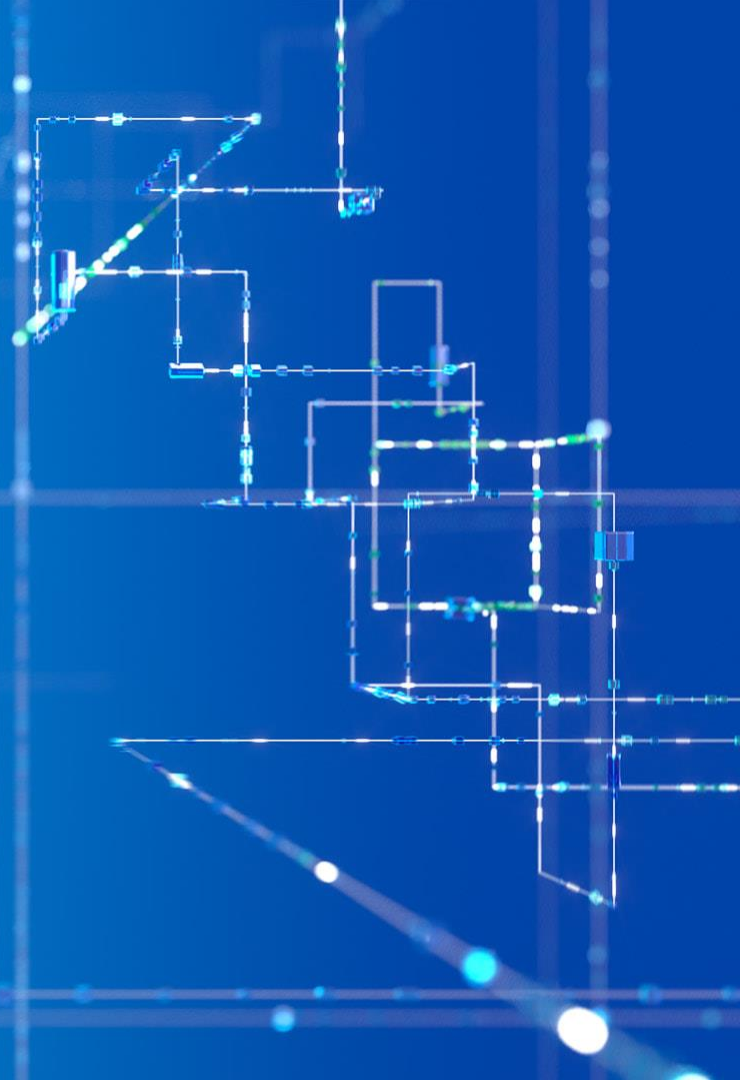


**GIGABYTE™**

**GIGA-BYTE TECHNOLOGY  
CORPORATION**

2026/5/15



## Agenda

1. 2026 Q1 Financial report
2. Strategy & Perspective
3. Product information
4. ESG
5. Q&A

# Disclaimer

This presentation has been prepared by Giga-byte Technology Co., Ltd. ( "Gigabyte" ). Any opinions expressed in this presentation are subject to change without notice as a result of using different assumptions and/or different criteria. Gigabyte is under no obligation to update or keep current the information contained herein. No representation or warranty, express or implied, is or will be made in or in relation to, and no responsibility or liability is or will be accepted by the Company as to, the accuracy or completeness of this presentation and any liability therefore is hereby expressly disclaimed.

Statements made in this presentation include forward-looking statements, which include, without limitation, statements about the issues, plans and expectations of Gigabyte. Forward-looking statements reflect, among other things, management' s plans and objectives for future operations, current views with respect to future events and future economic performances and projections of various financial conditions. These forward-looking statements involve known and unknown risks, uncertainties and other factors which may cause actual results to differ substantially from those expressed or implied by such forward-looking statements.

# 2026 Q1 Finance Report

# 2026/3/31 VS 2025/3/31 資產負債表 Balance Sheet

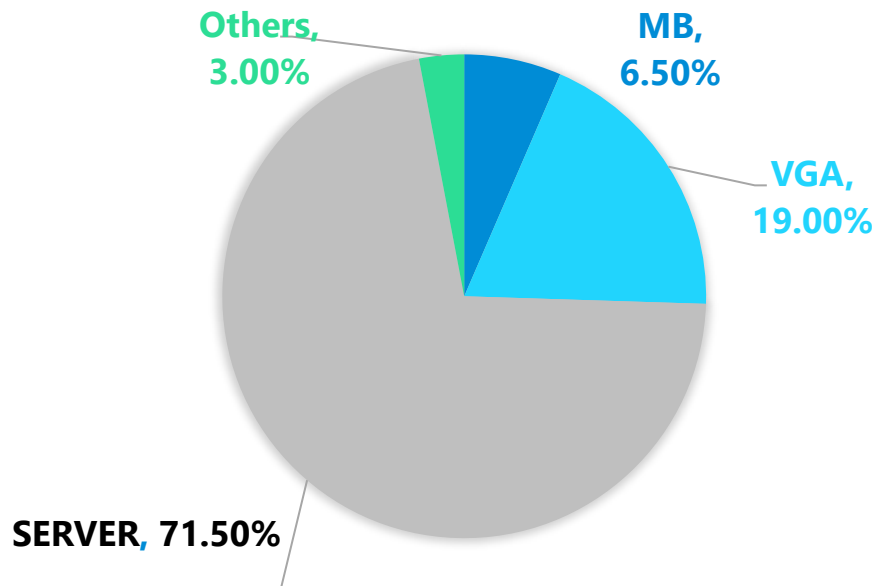
in NT\$100 Mn	2026/3/31	2025/3/31	YoY Growth	YoY %
現金及約當現金 Cash & Equivalents	633.11	426.33	206.78	58.50%
應收帳款 Accounts Receivable	239.33	307.10	-67.77	-22.06%
存貨 Inventories	1,316.25	585.30	730.95	124.88%
流動資產 Current Assets	2,340.87	1,389.60	951.27	68.45%
固定資產 Fixed Assets	137.89	110.98	26.91	24.24%
<b>資產總計 Total Assets</b>	<b>2,478.26</b>	<b>1,500.58</b>	<b>977.68</b>	<b>65.15%</b>
應付帳款 Accounts Payable	665.07	294.21	370.86	126.05%
流動負債 Current Liabilities	1,703.74	723.17	980.57	135.59%
<b>負債總計 Total Liabilities</b>	<b>1,807.81</b>	<b>914.25</b>	<b>893.56</b>	<b>97.73%</b>
業主權益 Stockholders ' Equity	645.67	569.59	76.08	13.35%
普通股股本 Paid-in Capital	66.99	66.99		

# 2026Q1V.S. 2025Q1損益表 Income Statement

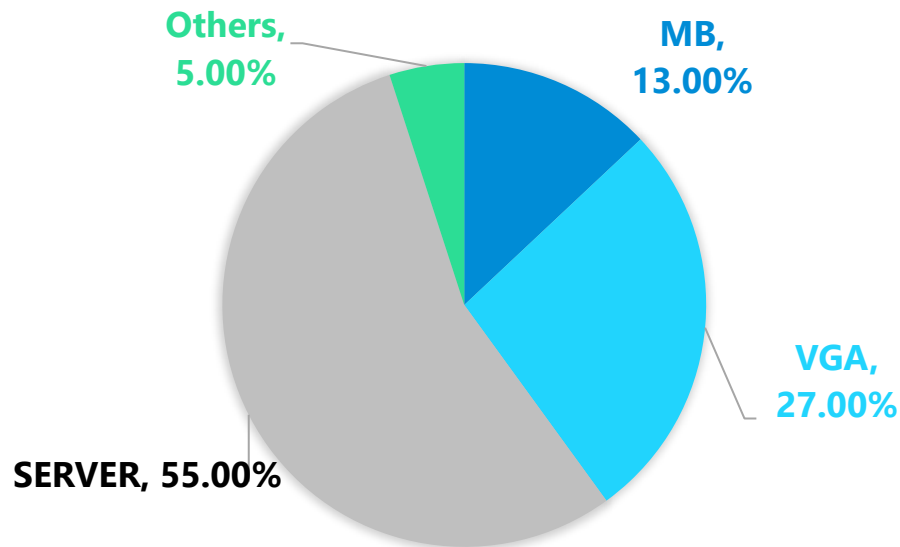
( in NT\$100Mn)	2026 Q1	2025 Q1	YoY Growth	YoY %
營業收入 Net Revenue	1,050.57	657.47	393.10	59.78%
營業成本 COGS	924.42	572.67	351.75	61.42%
營業毛利 Gross Profit	126.14	84.80	41.34	48.75%
營業費用 Operating Expenses	52.00	42.40	9.60	22.64%
營業利益 Operating Profit	74.13	42.39	31.74	74.87%
稅前淨利 Pre-Tax Profit	70.54	44.77	25.77	57.56%
所得稅費用 Tax	14.10	10.85	3.25	29.95%
本期淨利 Net Profit	56.44	33.92	22.52	66.39%
<b>EPS</b>	<b>7.86</b>	<b>4.65</b>	<b>3.21</b>	<b>69.03%</b>
毛利率 Gross Margin %	12.01%	12.90%		
營業費用率 Operating Expense %	4.95%	6.45%		
營業利益率 Operating Margin %	7.06%	6.45%		

# 2026Q1/ 2025Q1 Revenue breakdown by product line

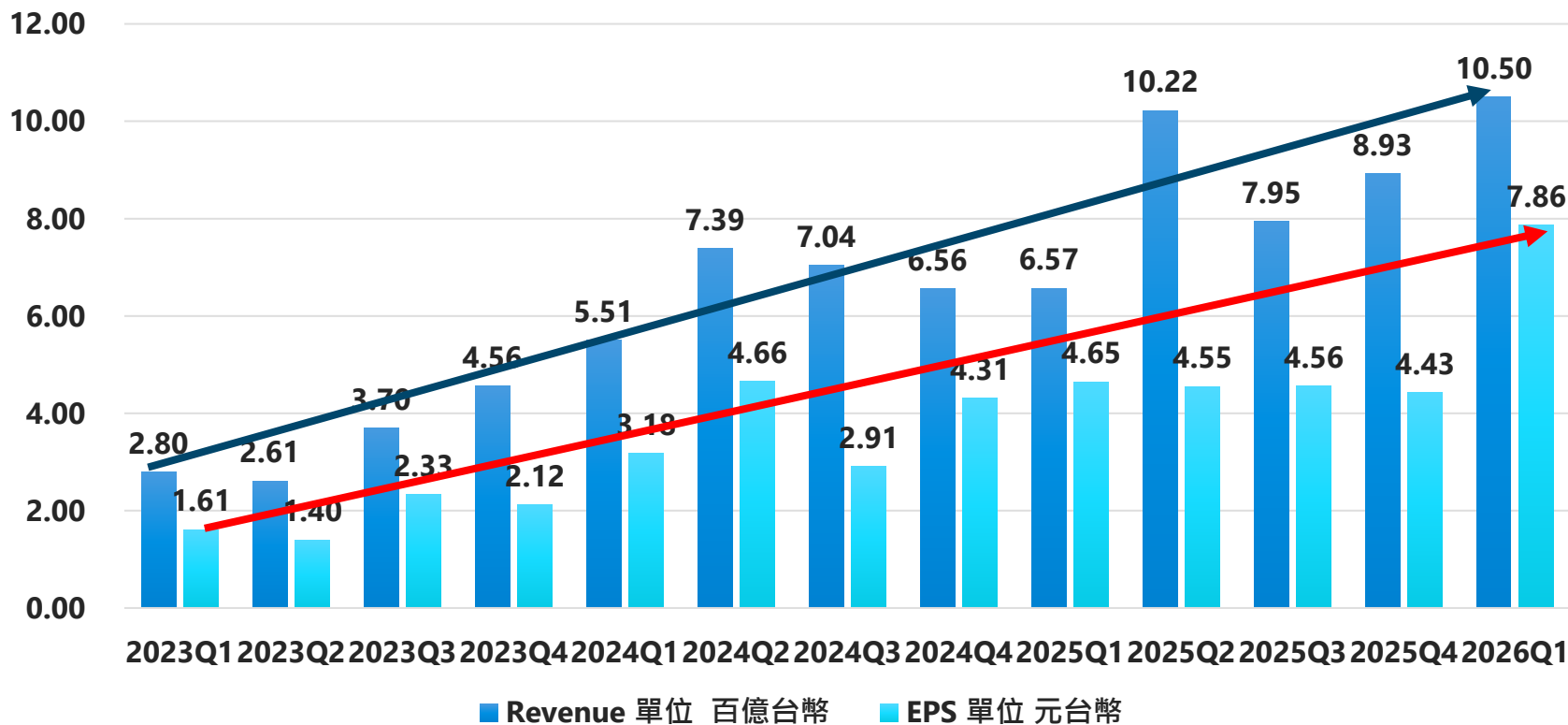
## 2026Q1 Revenue %



## 2025Q1 Revenue %

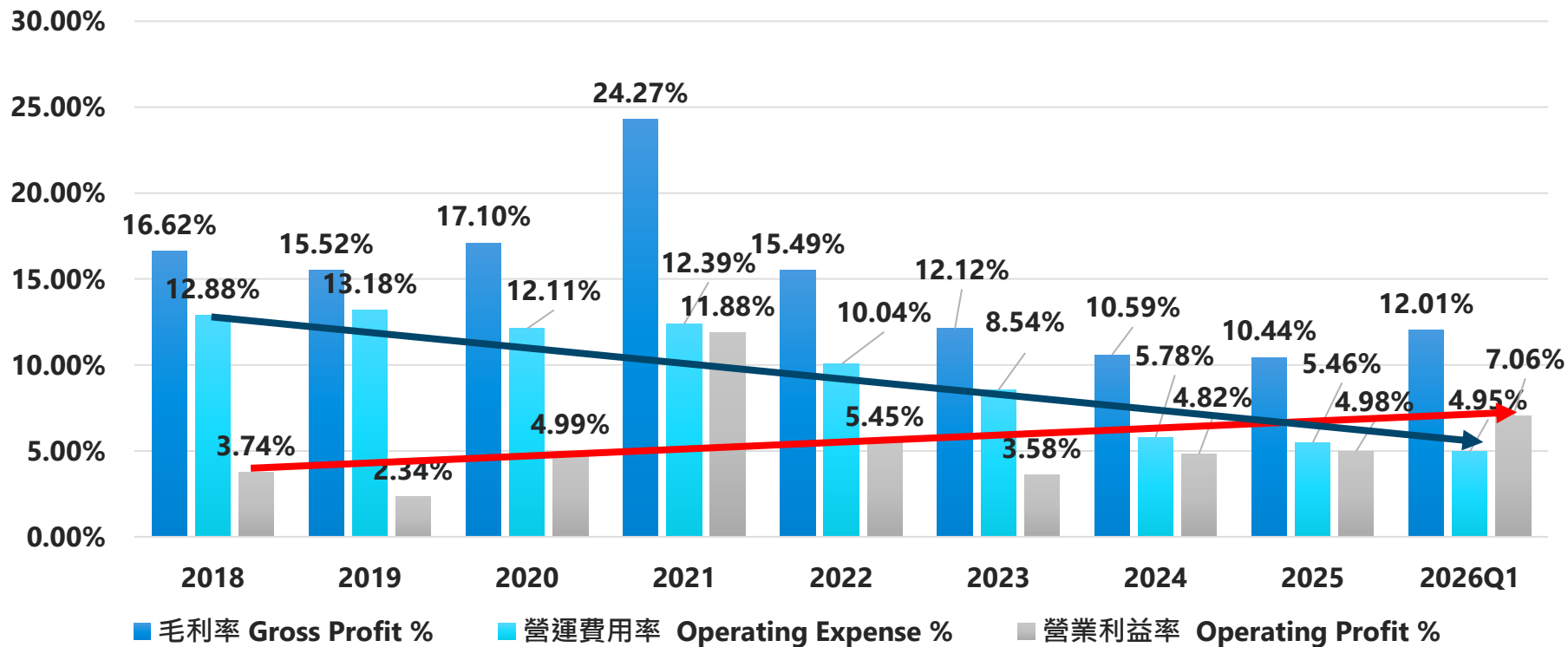


# 2023Q1 --- 2026Q1 Quarterly Revenue & EPS



2018--- 2026

年度毛利率 Gross Profit % / 營運費用率 Operating Expense % / 營業利益率 Operating Profit %



# 2026Q1 Operation Highlight & 2026 Perspective

## 1) Operating Performance Continues to Reach Record Highs

2026Q1, revenue NT\$105 billion, YoY growth 60%,  
2026Q1 EPS 7.86, YoY 69%  
— both setting new all-time highs.

## 2) CommonWealth Magazine's 2026 Top 2000 Enterprises Survey:

- 1) GIGABYTE Technology ranked No. 16 in the manufacturing sector
- 2) Ranked No. 1 in computer peripherals and components

## 3) The primary growth driver in 2026 Q1 revenue came from strong AI server demand, with YoY growth of 110%.

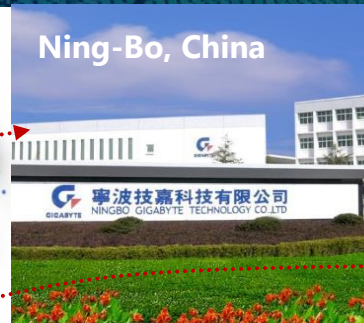
# 2026 Operation Highlight & 2026 Perspective

## 4) "Three Margins Improving Simultaneously"

- 2026 Q1 Gross Margin reached 12.01%, up 1.75% QoQ compared with 2025 Q4.
- 2026 Q1 Operating Margin reached 7.06%, up 2.8 % points QoQ compared with 2025 Q4.
- 2026 Q1 Net Margin reached 5.37%, up 1.73 %QoQ compared with 2025 Q4.

5) GIGABYTE continues to provide comprehensive product coverage across both AI cloud and edge computing markets, while continuously optimizing its product mix. Customer demand for computing power remains strong, and the outlook stays positive. Revenue is expected to continue reaching new highs throughout 2026.

# GIGABYTE GLOBLE MANUFACTURING SITES



# GIGABYTE SERVER SOLUTION

# GB300 NVL72 in Production

- **GB300 NVL72:** rack-scale AI system built on NVIDIA GB300 Grace™ Blackwell Ultra Superchips, with 72 GPUs and 36 CPUs
- **G4L4-SD3-LAX7:** liquid-cooled GPU server supporting NVIDIA HGX B300 platform
- **W775-V10-L01:** desk-side AI workstation powered by GB300 Superchip
- Designed for AI development, training, and large-scale deployment environments



# Vera Rubin Platforms Under Development

- Early-stage development aligned with next-generation GPU roadmap
- Platform architecture preparation for future AI infrastructure upgrades
- Supporting next-generation training and inference workloads
- Ensuring continuity across AI platform cycles

**GIGABYTE**



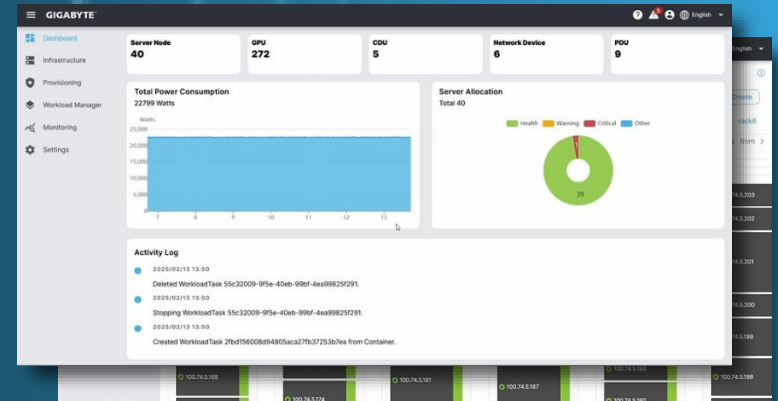
**NVIDIA Vera Rubin NVL72**

Unified by Design. Powerful by Nature.



# GIGAPOD + GPM Integrated Solution

- **GIGAPOD:** pre-integrated AI Pod for high-density GPU cluster deployment
- **GPM:** unified platform for monitoring, scheduling, and resource management
- AI Training Pod and HPC / Inference Pod deployment models
- Inference platforms leveraging RTX PRO 6000 and MI350 series GPUs
- HPC POD leveraging high-density series systems and blade series systems
- Enabling scalable, efficient, and standardized infrastructure deployment



# GPM – GIGAPOD Management Platform

## Applications & Cloud Services

### Software Management - GIGABYTE POD Manager (GPM)

#### Workload Management

AI

NVIDIA AI  
Enterprise

MLOps  
Platform

Bare-metal, HPC, Virtualization,  
Containers, NVIDIA Omniverse™, etc.

#### Cluster Management

NVIDIA Base Command™

GIGABYTE Cluster Manager

### Infrastructure Management

Compute Nodes

Management Nodes

Storage Systems

Cooling Systems

Network Fabrics

OS Provisioning

Power Resource

Monitoring

### Architecting Service

Project Consultation  
and Evaluation

Site Planning and  
Floor Plan Design

Hardware and Software  
Integration

Cabling Design  
and Installation

Power and Thermal  
Management

Data Center Deployment  
and Validation

# GAIFA: AI Factory R&D and Acceleration Platform From Simulation to Deployment

- End-to-end AI Factory platform from design to deployment
- Digital twin simulation reducing deployment risks
- Validated PoC ensuring optimized performance and cost
- Blueprint-driven architecture from L6 to L13
- Precision deployment through Sim-to-Real execution
- **GADU (GIGABYTE Accelerated Deployment Unit): modular units enabling scalable implementation**



# GIGABYTE MB SOLUTION

技嘉 AORUS MB

# D5 Duo X – DDR5 的全新突破

技嘉全新「D5 Duo X」技術，可突破過去 DDR5 記憶體在速度與容量不可兼得的限制。透過獨家雙插槽超頻架構，同時支援 CU-DIMM 10400MT/s 超高頻速度，與 CQ-DIMM 的兩倍容量擴充，以 2 條 DIMM 達成 4 條 DIMM 的等效容量，實現「速度與容量，一次擁有」。

AORUS

Z890 AORUS ELITE DUO X

DUO X FOR MORE.

GIGABYTE™

GIGABYTE



技嘉 AORUS MB

# Ultra Turbo Mode 一鍵解鎖隱藏效能

技嘉全新 Z890 Plus 改版產品搭載「Ultra Turbo Mode」，可透過獨家深層系統最佳化技術，以一鍵操作全面釋放 Intel® Core™ Ultra 200S 系列處理器（K-SKU）的隱藏效能潛力，最高可提升 40% 效能表現。

NEW Z890 SERIES  
PLUS ULTRA



GIGABYTE

技嘉 AORUS MB

# AERO木質主機板 - 科技與自然的雙重詮釋

技嘉 AERO Wood 主機板，是業界第一個將木質設計融入主機板的產品，以木質紋理重新定義主機板美學。透過光感銀白與沉穩暗棕兩種色調，將天然木紋融入頂級效能平台，讓每一台主機都成為獨一無二的生活藝術品。以原始質感，訴說永恆優雅。



GIGABYTE

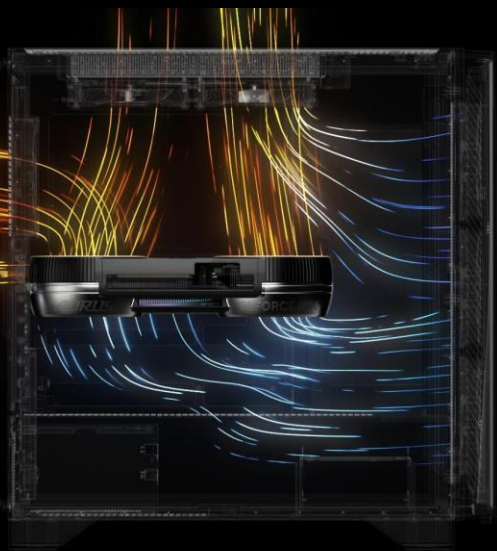
# GIGABYTE VGA SOLUTION

# AORUS INFINITY 系列 – 搭載 WINDFORCE HYPERBURST 以跨世代散熱革命實現顯卡設計的超前部署

 INFINITY



reddot winner 2026



# AORUS AI BOX 系列 – 行動用戶AI 邊緣運算最佳選擇



AORUS

GEFORCE RTX  
Powering Advanced AI

Thunderbolt

AORUS RTX 5090 AI BOX  
POWERING GAMING, CREATIVITY AND AI

GIGABYTE

This advertisement features a large, square, metallic AORUS RTX 5090 AI BOX in the center. The background is a dark, futuristic interface with multiple monitors displaying data, charts, and a 3D architectural rendering. The AORUS logo is in the top left, and logos for NVIDIA GeForce RTX and Thunderbolt are in the top right. The product name and tagline are prominently displayed at the bottom, along with the GIGABYTE logo.



GEFORCE RTX  
Powering Advanced AI

Thunderbolt

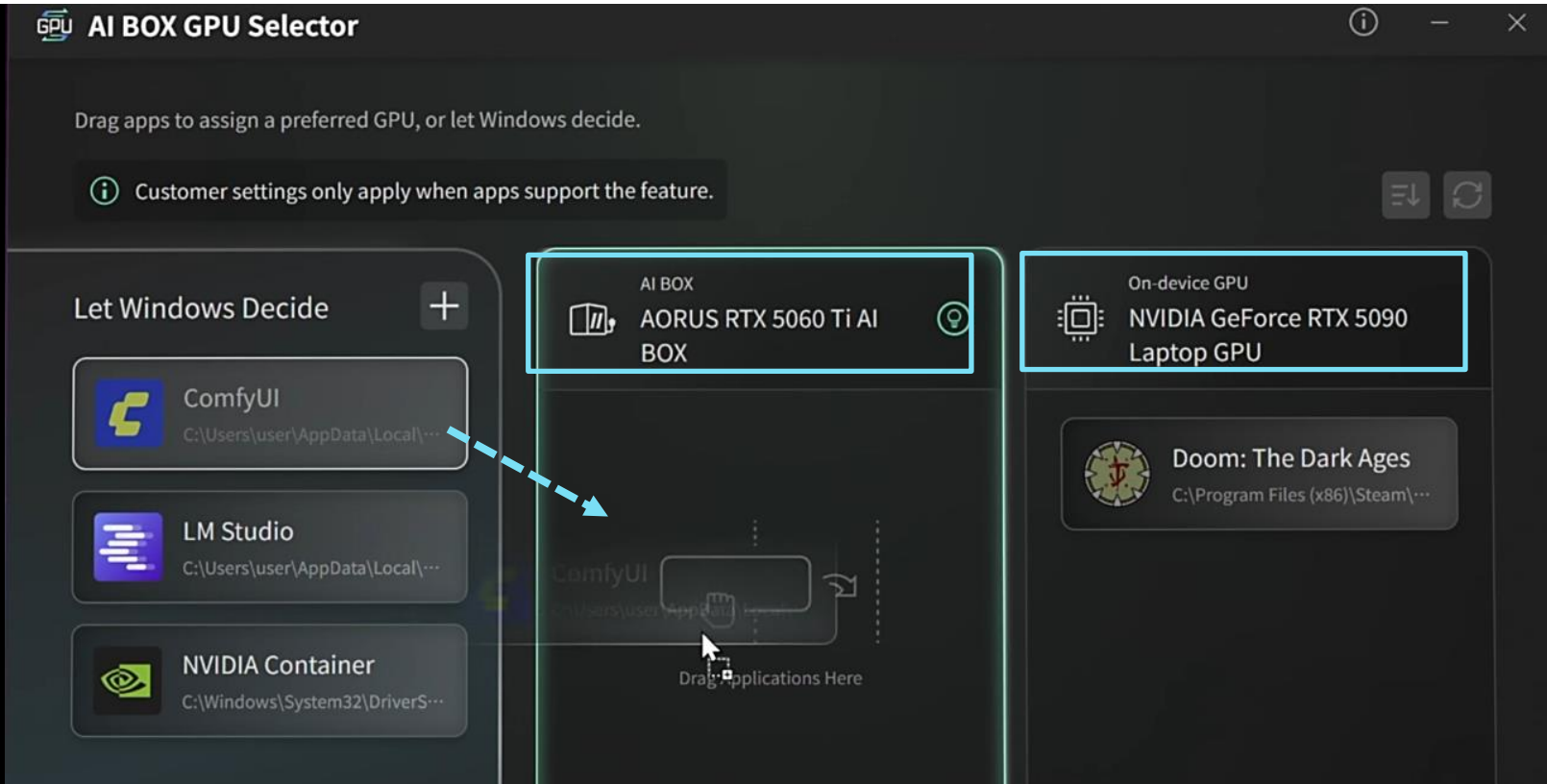
AORUS RTX 5060 Ti AI BOX  
Powering Gaming, Creativity and AI

This advertisement features a smaller, vertical AORUS RTX 5060 Ti AI BOX. The background is a dark, futuristic interface with a glowing blue sphere and various icons representing AI, gaming, and creativity. The AORUS logo is on the right side of the laptop. Logos for NVIDIA GeForce RTX and Thunderbolt are in the top right. The product name and tagline are prominently displayed at the bottom.



# 從硬體製造邁向智慧賦能

## AI BOX GPU Selector - 定義軟硬體整合的 AI 算力調度專家



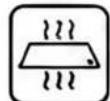
# GIGABYTE NOTEBOOK SOLUTION

# AORUS MASTER 16

## 極限散熱



WINDFORCE Infinity EX  
0dB 智慧散熱技術



均溫板 (Vapor Chamber)  
結合 0.075mm 超薄鰭片



175W 最高 TGP

“相當出色的散熱工程設計”

— TechRadar



19mm



## 工藝突破

厚度-17%  
僅19mm

“比競品更令人印象深刻的流線設計 (Sleeker)” — Crimson Tech

# 國際獎項與科技媒體強力推薦

TechRadar.

PCGAMER

IGN

Newegg  
Insider

PCMag<sup>®</sup>

IT Voice



**Aero x16**  
Red Dot Award



**Gaming A16 Pro**  
Red Dot Award



**Aorus Master 16**  
BC Award



# GIGABYTE AI TOP SOLUTION

# AI TOP 100：地端 AI 運算的頂尖垂直整合解決方案

- 01 頂尖運算效能：AMD Ryzen™ 9 9950X 與 RTX 5090 旗艦組合
- 02 高度穩定性：伺服器級規格與 16+2+2 相供電設計
- 03 卓越擴充潛力：雙 GPU 支援與高達 256GB 記憶體容量
- 04 智慧管理與整合：獨家 AI TOP Utility 軟體與百大應用支援



# AI TOP WRX90 旗艦級主機板 引領地端AI運算成長

# 9

## GPUs Support

## 極致算力擴充與效能優勢

搭載 7 組 PCIe 5.0 x16 插槽與 2 組 M.2 8i 接口，提供業界領先的最高 9 張顯卡並行運算力，協助企業打破地端模型訓練的硬體瓶頸。



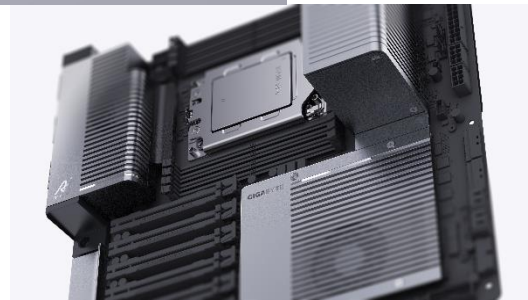
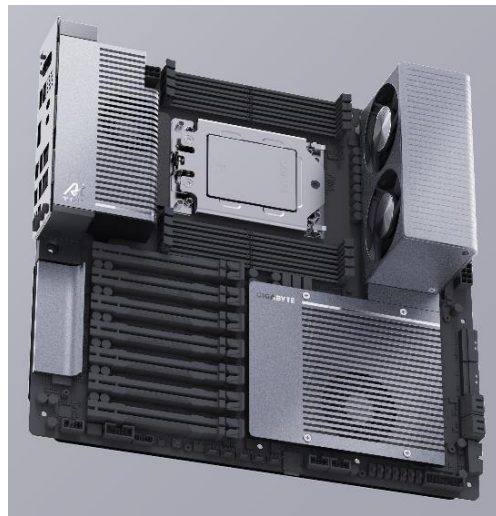
頂級記憶體規格 配備 8 個 DDR5 RDIMM 插槽



強悍供電與散熱設計：雙 PSU 支援與 RDIMM 主動式散熱



伺服器級遠端管理：ASPEED AST2600 BMC 系統



\*註：產品外觀顏色與機構設計尚未定案，僅供參考，請以最終實機為準。

# AORUS P1600W 旗艦電源 高效能運算首選

作為 AI TOP 生態系的能量核心，AORUS P1600W 專為高負載 AI 訓練設計。透過 80 PLUS Titanium 頂級轉換效率與卓越的擴充能力，協助企業建構穩定、節能且具備高度監控能力的本地端運算中心。



AI 專屬擴展性



LCD 智能監控



鈦金級品質承諾



頂級元件用料  
GaN 氮化鎵技術導入



1600W

TOTAL POWER

94%

EFFICIENCY

10 YR

WARRANTY

## 技嘉科技 2026 ESG

環境 Environmental  
社會 Society  
公司治理 Governance

韌性x低碳x 共融

2022 技嘉永續發展報告書

# 2025 榮光時刻： 治理 × 品牌 × 永續全方位肯定

永續  
人文實踐



★ 優於去年

## 評級成果

S&P Global • CSA評鑑 66 ( PR85 ) ★

• 臺灣高薪100指數  
( 連續8年入選 )

TRIPs 企業減碳溫度計 • 升溫1.404°C，卓越成效★

• 臺灣永續指數  
( 連續2年入選 )

MSCI • ESG評級 BBB ★

• TIP臺灣永續評鑑 AA ★

SUSTAINALYTICS • ESG風險評級 17.5 ★

• 富時羅素ESG評級 3.7

第22屆 遠見ESG企業永續獎  
綜合績效 電子科技類組 首獎

2025幸福企業 銀獎  
第3屆聯經ASSET 人文企業獎教育提升獎  
卓越獎&創新特別獎



2025  
全齡企業百強



ISO 9001 Plus Award  
變革創新管理品質典範獎



子公司-百事益國際  
新北市學習型企業獎  
首屆CTI實踐標章得主  
第六屆台灣循環經濟獎

## 卓越品牌

## 永續領導



• 2025  
氣候變遷 水安全 B  
(連續10年管理級以上)

供應鏈議合 A  
(連續2年領導級)



• 2025 亞太氣候領袖



• 2025年取得經濟部產業發展署  
綠色工廠-清潔生產評估系統標章



品牌價值 1.09 億美元，成長25%  
台灣國際品牌價值 NO.22



iF Design Award 4 項產品  
RedDot Design Award 7 項產品



Best Choice Award 1 項產品  
台灣精品獎 6 項產品

# 創新科技，升級你的生活，永續企業與品牌

以2009年為基準年  
溫室氣體排放  
降低 50.4% 達成減碳承諾  
每單位營收的碳排放強度  
下降92.9%

承諾讓地球再次  
綠意盎然  
2025年12,968棵  
我們種植超過 128,907 棵樹木

維持一個清潔和環保的企業和供應鏈，  
將水消耗較2009年  
基準降低 32.5%



2025年6月技嘉南平廠取得經濟部 產業發展署 綠色工廠認證

舉辦教育研討會等相關活動，  
以傳遞社會與環保意識  
超過124,788小時

為培養創新型人才，  
“G-Design”  
連續舉辦 23年

降低企業營運的環境營響，  
營收廢棄物排放強度  
較2009年基準年  
下降81.7%

# 遠見ESG企業永續獎「綜合績效\_電子科技業首獎」



## 榮耀時刻\_技嘉科技再創永續新里程

由集團總經理李宜泰先生代表領獎，這不僅是對我們長期投入永續發展的肯定，更是全體同仁與夥伴共同努力的成果 ❤️

今年ESG企業永續獎也凸顯科技業正在把AI與數據能力轉化為永續公具綜合績效電子科技業首獎技嘉科技，正是代表案例之一。

「技嘉以 創新科技 美化人生 為企業宗旨，近年更成為AI伺服器重要品牌。」技嘉科技集團總經理李宜泰指出，當各界都在討論AI時，技嘉早在五年前便投入AI發展，並逐步延伸到實體應用，**技嘉透過創新科技解決環境與社會問題，讓AI不只是產業成長動能，也能成為推動ESG的工具。**



## 3/22 【減量·共享·愛地球】供應鏈淨灘

—2818公斤，  
不只是清理，是擴大影響力的開始—

2818 kg | 清除海廢總量

42家/235人 | 供應鏈共同參與

33次 | 持續行動累積影響

從技嘉科技出發，串聯供應鏈，  
將淨灘行動轉化為永續的影響力



感謝

Q & A